

SOUTHWEST **AGRI-PLASTICS**[®], INC.

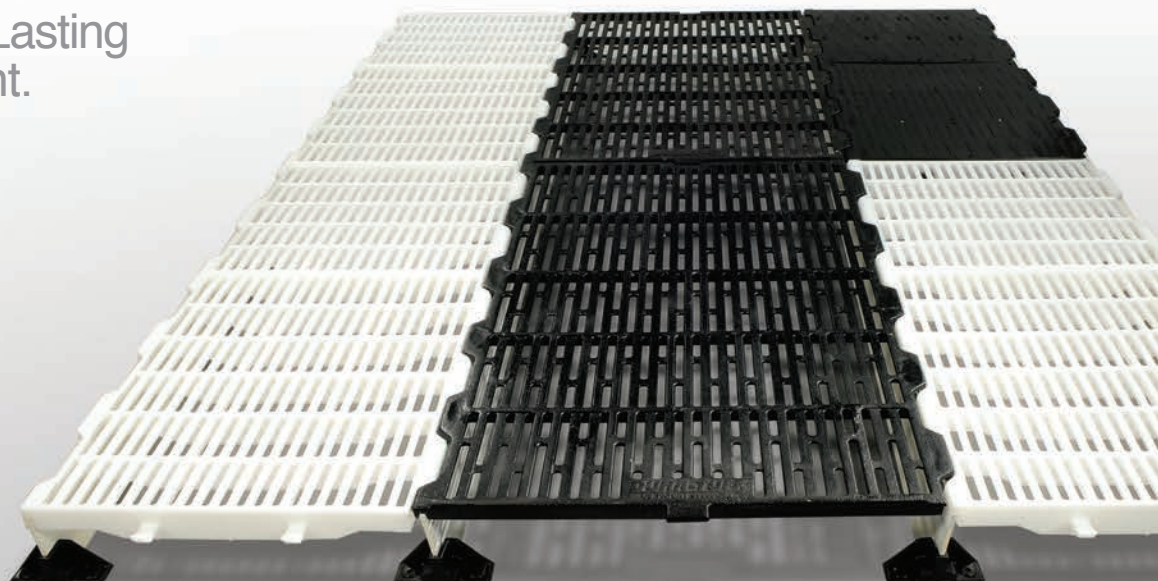
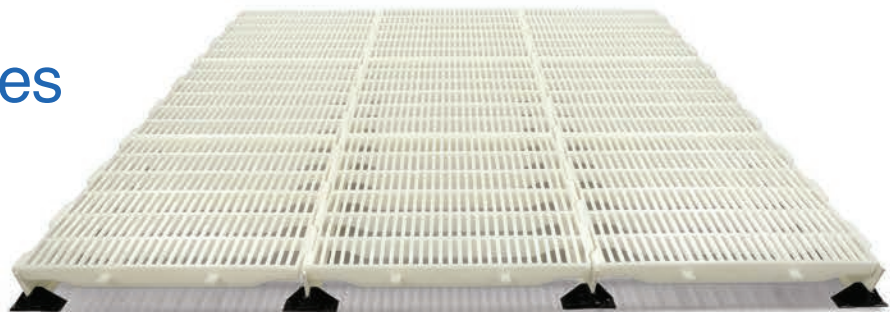


DURA-TUFF[®]

SWINE FLOORING SYSTEMS

From Farrowing Facilities
to Swine Nurseries...
We Help You Grow!

High Impact, Long Lasting
and Wear Resistant.
Superior Traction,
Comfortable and
Easy to Clean.



SWAPINC.COM

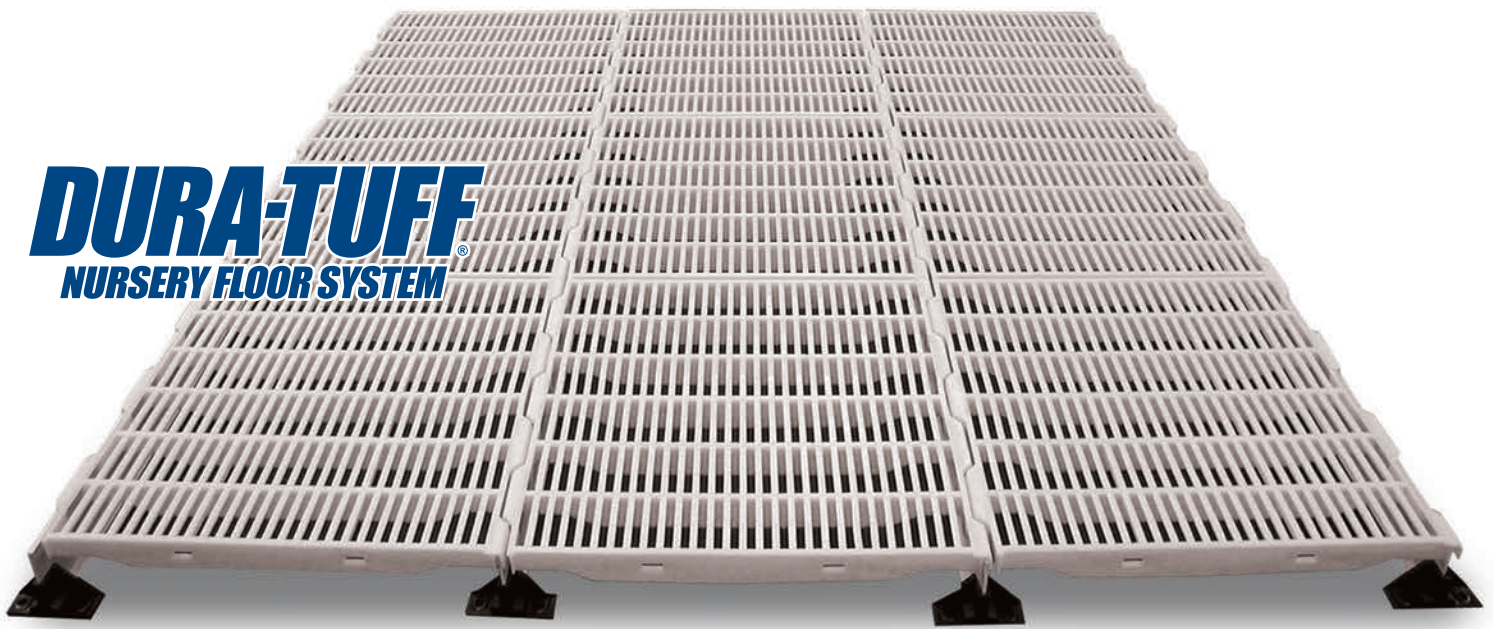
DURA-TUFF NURSERY FLOORING SYSTEMS

Southwest Agri-Plastics' **DURA-TUFF Nursery Floor System** combines high impact, wear resistant plastic flooring with rust and corrosion proof fiberglass beams to create clean, comfortable, long lasting flooring for your pigs. Our solid plastic construction resists bacteria build up and sheds waste easily, while larger openings allow for better manure filtration. **DURA-TUFF's** interlocking system creates a 1/4" (7mm) gap at the ends and sides of the floor, preventing manure build up common to tight fitting floors.

Our high/low rib design provides superior traction even when wet, and prevents manure from being pushed to the corners, which can cause premature corrosion on steel penning. **DURA-TUFF** plastic swine floor does not rob pigs of body heat, providing a warmer, more comfortable environment for your pigs. University studies indicate pigs on plastic floor versus metal floor have shown a 15% improvement in their feed to gain ratio due to less stress, which translates to your bottom line.

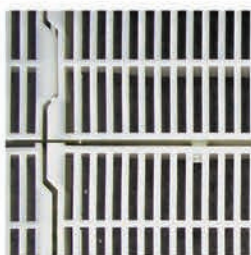
FEATURES & BENEFITS

- Constructed from High Grade Plastic Material
- Reinforced Stress Points
- Superior Impact & Wear Resistance
- Increased Airflow
- Better Waste Discharge
- Easier Cleaning
- Maintains Clean Environment
- Superior Traction
- Warm, Comfortable Surface
- Rot / Rust / Corrosion Proof
- Non-Porous / Moisture Resistant Surfaces
- Light Weight / Rigid Designs
- No Rough Edges
- Cost Effective

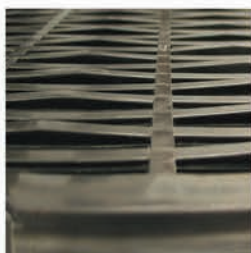


NURSERY FLOOR SYSTEMS

SUPERIOR DESIGN, SUPERIOR PERFORMANCE



1/4" Perimeter Gap



High / Low Rib Design



V-Shaped Rib Design



Standard / Custom Colors

CLEANABILITY

- The 7/16" (11mm) openings equate to a 50% open area for better manure filtration.
- The 1/4" (7mm) gap around the perimeter of each piece provides superior cleanability compared to other floors that fit tight. This gap allows manure to filter through instead of building up and is easier to power wash.
- The high/low rib design provides superior traction and prevents manure from being pushed out to the corners, which can cause premature corrosion of the steel penning.
- V-shaped rib design prevents manure accumulation on the underside of the floor and is easily accessible for top down cleaning.
- The solid plastic construction is rust/corrosion proof, resists bacteria build up and sheds waste easily.

DURABILITY

- **DURA-TUFF** plastic flooring is made from a special high impact virgin polypropylene material making its wear and impact resistance superior to other plastic flooring.
- Deep cross ribs that provides superior strength.

WARM SURFACE

- **DURA-TUFF** plastic swine floor does not rob pigs of body heat.
- University studies indicate pigs on plastic floor versus metal floor have shown 15% improvement in their feed to gain ratio due to less stress.

REINFORCED SUPPORT SYSTEM

- Superior fiberglass support system that clear spans up to 10 feet.
- For clear spans over 10 feet we offer a leg support system.
- The fiberglass beam is corrosion/rust proof and price competitive with steel supports.
- **DURA-TUFF** plastic floor will also work with 1/4" steel beams. The steel beams must be hot dip galvanized or stainless.

PRICE

- Beams placed on 24" centers reduce the overall price per square foot.
- State of the art manufacturing that provides a better product at a better price.

DISCLAIMER: Manufacturer recommends storing product away from exposure to the sun, as its U.V. rays and other general weather conditions will diminish the life the product. Exposure to outside weather elements voids all warranties.

DURA-TUFF FARROWING FLOORING SYSTEMS

Southwest Agri-Plastics' **DURA-TUFF Farrowing Floor System** offers a variety of options to meet the requirements and specifications of any farrowing operation. The plastic and ductile combination has proven to reduce crush factor by providing a clean cool surface for the sow and a warm comfortable surface for the piglets. Our interlocking ductile iron sow floor interlocks with the plastic creep area floor on the fiberglass beam to create the most stable farrowing floor yet. It also interlocks on the ends to prevent the ductile iron floor from spreading apart.

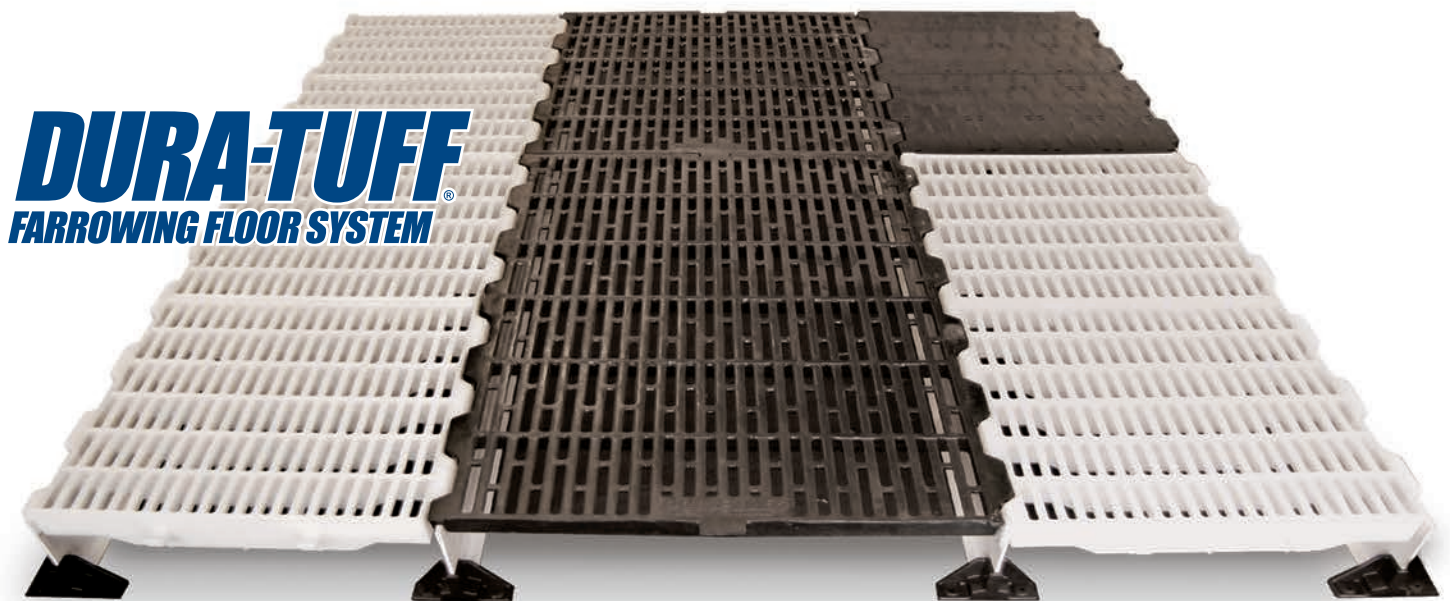
Made from high grade virgin polypropylene material, **DURA-TUFF's** wear and impact resistance is superior to other plastic floors. Our raised sow center provides a better access to teats for nursing. The cast iron is raised 1" (26mm) which puts the teats in the optimal position while the piglets stay safe in the creep area. In addition to raised and flat cast iron sow center, we also offer an all plastic farrowing floor.

DURA-TUFF Plastic Creep Floor can also be used with **DURA-TUFF Plastic Sow Floor**, Tri-Bar®, woven wire, and coated wire sow centers.

See page 6 for available sizes and specifications.

FEATURES & BENEFITS

- Constructed from High Grade Plastic Material
- Reinforced Stress Points
- Superior Impact & Wear Resistance
- Increased Airflow
- Better Waste Discharge
- Easier Cleaning
- Maintains Clean Environment
- Better Teat Access
- Reduced Crush Factor
- Rot / Rust / Corrosion Proof
- Non-Porous / Moisture Resistant Surfaces
- Light Weight / Rigid Designs
- Universal Compatibility
- No Rough Edges
- Cost Effective



FARROWING FLOOR SYSTEMS

DUCTILE IRON FARROWING FLOOR



Flat Ductile Iron Sow Floor



Raised Ductile Iron Sow Floor



Solid Panel Creep Area



Plastic Sow Floor

REDUCED CRUSH FACTOR

- The plastic/ductile combination provides a cool surface for the sow while the plastic creep area provides a warm surface for the piglets.
- This combination will keep the piglets on the warm plastic surface and reduce the crush factor.

STRENGTH

- New ductile iron interlocking floor is twice as strong as grey iron used by other floors in the market.
- Independent test shows **DURA-TUFF** ductile iron flooring is stronger than cast iron floors made in Germany.
- The plastic sow floor is made from a high impact virgin polypropylene material and its heavy-duty design will hold up in any farrowing operation.

TRACTION

- The top of our ductile iron flooring has a high/low design for superior traction.
- There are no rough edges; the surface provides a cool comfortable environment for the sow.
- The plastic sow floor surface features raised traction squares to aid sows in getting up and down.

FLEXIBILITY

- Designed to fit most farrowing crate dimensions.
- Available in raised or flat interlocking ductile iron sow floor.
- Ductile iron or plastic sow centers available.
- Solid panel for creep area available.

SUPPORT SYSTEM

- Superior fiberglass support system that clear spans up to 8 feet.
- For clear spans over 8 feet we offer a leg support system.
- The fiberglass beam is corrosion/rust proof and price to compete with steel supports.
- **DURA-TUFF** farrowing floor systems will also work with 1/4" steel beams. The steel beams must be hot dip galvanized or stainless.

PLASTIC FARROWING FLOOR

Heavy-duty construction from high-grade virgin polypropylene material makes **DURA-TUFF's** wear and impact resistance superior to other plastic farrowing floors. Raised traction squares aid sows in getting up and down while providing a comfortable laying surface. Plastic sow floor interlocks with our nursery/creep floor to provide the most economical farrowing floor on the market. We offer a superior fiberglass support system that clear spans up to 8 feet, is corrosion/rust proof and priced to compete with steel supports. Twelve-inch support beam spacing under the sow for maximum durability. **DURA-TUFF** farrowing floor system will work with steel beams. *Steel beams must be hot dip galvanized or stainless.*

DISCLAIMER: Manufacturer recommends storing product away from exposure to the sun, as its U.V. rays and other general weather conditions will diminish the life the product. Exposure to outside weather elements voids all warranties.

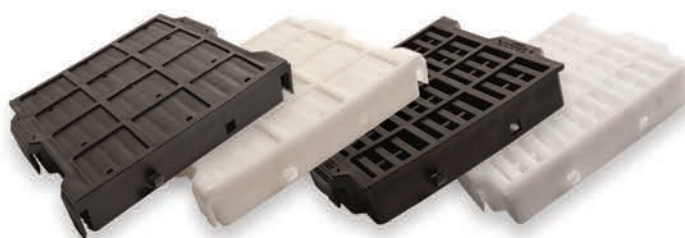
SOUTHWEST **AGRI-PLASTICS**, INC.®



DURA-TUFF Plastic Creep & Nursery Floor

Model	Size (W x L)		Type	Color Options
	in.	mm		
DT24X24	24 x 24	610 x 610	Open	Blk, Wht, Custom*
DT24X18	24 x 18	610 x 458	Open	Blk, Wht, Custom*
DTN18X24	18 x 24	458 x 610	Open or Solid	Blk, Wht, Custom*
DT18X18	18 x 18	458 x 458	Open or Solid	Blk, Wht, Custom*

* Custom colors available upon request. Call for quote.



DURA-TUFF Plastic Sow Floor

Model	Size (W x L)		Type	Color Options
	in.	mm		
DT12X12	12 x 12	305 x 305	Open or Solid	Blk, Wht, Custom*

* Custom colors available upon request. Call for quote.



DURA-TUFF Raised & Flat Interlocking Ductile Iron Sow Floor

Model	Size (W x L)		Type
	in.	mm	
DT24X42 ID	24 x 42	610 x 1067	Raised or Flat
DT24X48 ID	24 x 48	610 x 1219	Raised or Flat
DT24X36 FID	24 x 36	610 x 914	Flat
DT24X24 ID	24 x 24	610 x 610	Raised or Flat
DTN24X18 ID	24 x 18	610 x 458	Raised or Flat



DURA-TUFF Raised & Flat Overlapping Ductile Iron Sow Floor

Model	Size (W x L)		Type
	in.	mm	
DT24X28 FDP	24 x 28	610 x 711	Floor Patch, 3-Sided Overlap, Flat Only
DT24X42	24 x 42	610 x 1067	Raised or Flat
DT24X48	24 x 48	610 x 1219	Raised or Flat



DURA-TUFF Fiberglass Support Beams

DURA-TUFF Fiberglass Support Beams are available in four heights (1-1/2 in., 3 in., 4 in., and 5 in.) and standard & custom lengths. For optimal performance use with **DURA-TUFF Beam Mounting Plates** or **Leg Support Systems**.

Model	Height		Width		Length
	in.	mm	in.	mm	
FGB-1.5	1-1/2	38.1 mm	1/4	7 mm	Cut to Length
FGB-3	3	76.2 mm	1/4	7 mm	Cut to Length
FGB-4	4	101.6 mm	1/4	7 mm	Cut to Length
FGB-5	5	127 mm	1/4	7 mm	Cut to Length

** Custom lengths available upon request. Call for quote.*

DURA-TUFF Plastic Beam Mounting Plates

Used wherever support beam comes in contact with concrete, **DURA-TUFF Plastic Beam Mounting Plates** protect and stabilize the fiberglass beams.

DURA-TUFF Leg Support System

DURA-TUFF Leg Support Systems are used for additional support with our fiberglass beam when clear spans exceed more than 10 feet in nursery applications or 8 feet in farrowing applications.

DURA-LOCK **SLAT-ARMOR** & Other Mounting Accessories

SLAT-ARMOR Floor Guard, **DURA-LOCK Anchoring System**, J-bolts, locking nuts, bolts, washers and stabilizer bars are also available. To determine which accessories best meet your needs, contact Southwest Agri-Plastics today.

**Assorted accessories not shown to scale.*

DISCLAIMER: Manufacturer recommends storing product away from exposure to the sun, as its U.V. rays and other general weather conditions will diminish the life the product. Exposure to outside weather elements voids all warranties.

SOUTHWEST AGRI-PLASTICS PRODUCT LINES



SWINE
PRODUCTS

POULTRY
PRODUCTS

HORTICULTURE
PRODUCTS

LIVESTOCK
PRODUCTS

EGG
TRANSPORT

CARGO
PROTECTION

MINI-
PALLET

KENNEL
FLOORING



SOUTHWEST AGRI-PLASTICS, INC.

16408 Midway Rd, Addison, TX 75001 Dallas, TX 75370-0008 Toll Free 800-288-9748 Local 972-735-8866 Fax 972-735-8896

SWAPINC.COM

Rev. 04.19