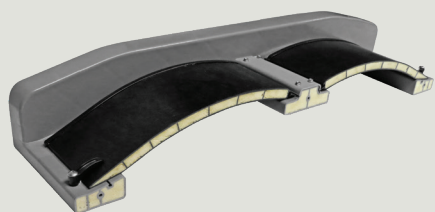
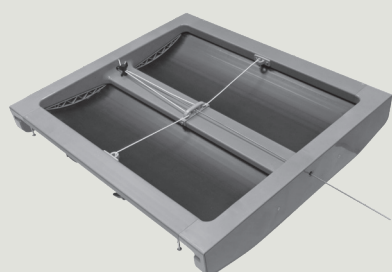


# DL3127 Insulated Attic Air Inlet



DL Inlet cutaway showing insulation in lids and housing



DL3127 Single Pull



DL3127 Double Pull



DL3127 Inlets in Hog Barn

**PATENT  
PENDING**



***Aerodynamic, curved insulated blade directs attic air along ceiling for proper air mixing***

**Part No. 90300**

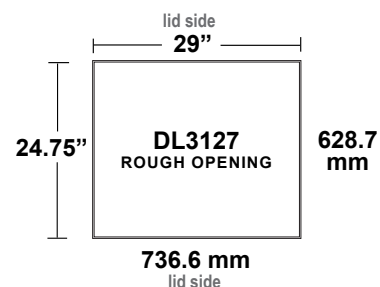
**CFM:** Approx. 3,107 @ 0.10 SP

**Rough Opening:** 29" x 24.75"

**Ship Weight:** Approx. 14 lbs

**ACTUATED ONLY**

**Additional sizes available**

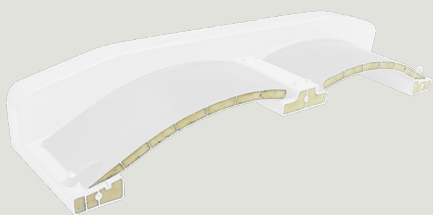


- Curved blade directs air along the ceiling for proper air mixing and minimizes condensation as well as inlet freeze-up.
- When inlet is in the shut-off position, it has been proven to seal up better for reduced fuel usage and have minimal leakage compared to the competition in the industry.
- Great for minimum to maximum ventilation when you need precise control of air movement.
- Housing blades constructed of virgin PVC for durability to withstand power-washing, yet also fully insulated to minimize condensation.
- All mounting hardware is included and comes pre-installed on the inlets for ease of installation into the ceiling.



**DOUBLE L GROUP LLC**

# DL3232 Insulated Attic Air Inlet



DL Inlet cutaway showing insulation in lids and housing



DL3232 Single Pull

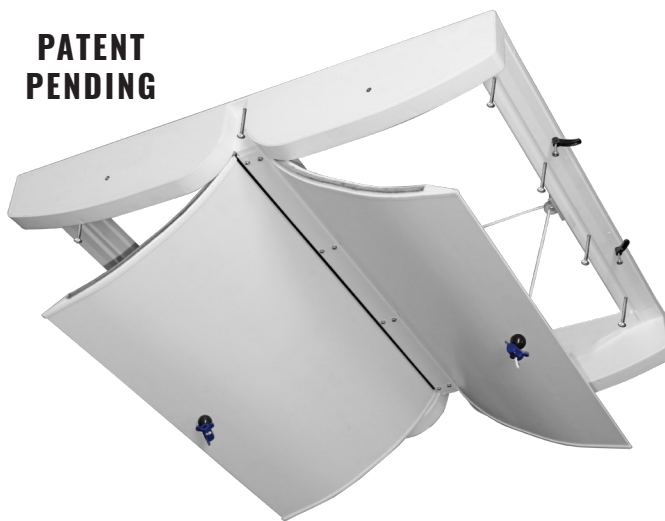


Inlet can be single pull or double pull



DL3232 Insulated Air Inlets Installed in Hog Barn

**PATENT  
PENDING**



***Aerodynamic, curved insulated blade directs attic air along ceiling for proper air mixing***

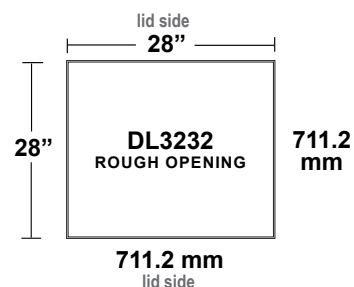
**Part No.** 90302P

**CFM:** Approx. 4,144 @ 0.10 SP

**Rough Opening:** 28" x 28"

**Ship Weight:** Approx. 18 lbs

**ACTUATED ONLY**

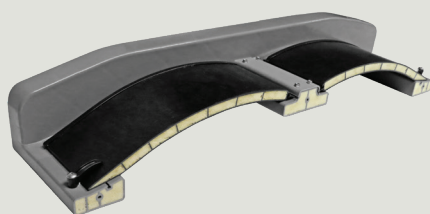


- Curved blade designed to bring air in parallel to the ceiling promoting the most efficient air mixing on the market.
- When inlet is in the shut-off position (each blade has 2 shut-offs), it has been proven to seal up better for reduced fuel usage and have minimal leakage compared to the competition in the industry.
- Square design promotes precision air movement during minimum ventilation by using a smaller opening, increasing the nozzle effect and air jet throw of the entering air. Design still allows maximum cfm's to be achieved in full open position.
- Housing and blades constructed of virgin PVC for durability to withstand powerwashing yet fully insulated to reduce condensation.
- All mounting hardware is included. Mounting screws will be in bag taped to the inlet lid for ease of installation into the ceiling.

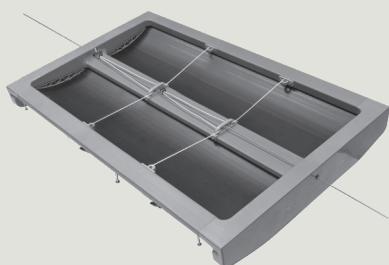


**DOUBLE L GROUP LLC**

# DL4727 Insulated Attic Air Inlet



DL Inlet cutaway showing insulation in lids and housing



DL4727 Single Pull



DL Inlet Double Pull



DL Inlets in Hog Barn



***Aerodynamic, curved insulated blade directs attic air along ceiling for proper air mixing***

**Part No. 90301**

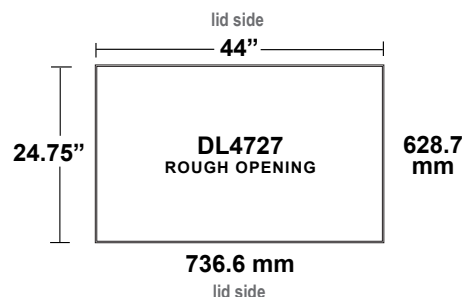
**CFM:** Approx. 4,750 @ 0.10 SP

**Rough Opening:** 44" x 24.75"

**Ship Weight:** Approx. 20 lbs

**ACTUATED ONLY**

**Additional sizes available**



- Curved blade directs air along the ceiling for proper air mixing and minimizes condensation as well as inlet freeze-up.
- When inlet is in the shut-off position, it has been proven to seal up better for reduced fuel usage and have minimal leakage compared to the competition in the industry.
- Great for minimum to maximum ventilation when you need precise control of air movement.
- Housing blades constructed of virgin PVC for durability to withstand power-washing, yet also fully insulated to minimize condensation.
- All mounting hardware is included and comes pre-installed on the inlets for ease of installation into the ceiling.



**DOUBLE L GROUP LLC**