



**CRYSTAL
SPRING**
HOG EQUIPMENT



Water-Space™ Wean-to-Finish Feeder

A better start for a better finish

Water-Space™ enables easy and natural water consumption.

Wet/Dry feeding improves daily gain while decreasing feed and water waste.

Pigs as small as 8 lbs (3.6 kg) benefit from additional gain of Wet/Dry feeding.

NEW Crystal Spring Nipple provides constant flow from the nipple with variable barn water pressure.

EZ-Adjust™ is simple and repeatable, providing precise feed flow control in 1/16" increments.

Feeds up to 16 pigs per space on wean-to-finish feeders.



1.204.433.7178
www.cshe.com



Water-Space™ Wean-to-Finish Feeder

series #
F16 **Water-Space™ Wean-to-Finish**
Guard present under water line
14-280+ lbs pigs

series #
WF8 **Water-Space™ Wean-to-Finish**
+ Two-Stage Feed Shelf
Throat insert included
Guard present under water line
8-280+ lbs pigs

series #
X **Extended Hopper Models**
Add 80% more feed capacity with the F16X
or WF8X models

High-quality construction

WF8 includes patented EZ-Adjust™ two stage shelf to quickly and easily lower the feed shelf 3" for the early weaned pig.

Heavy duty: all 304 series stainless.

Lapped and folded parts eliminate sharp edges and strengthen wear points.

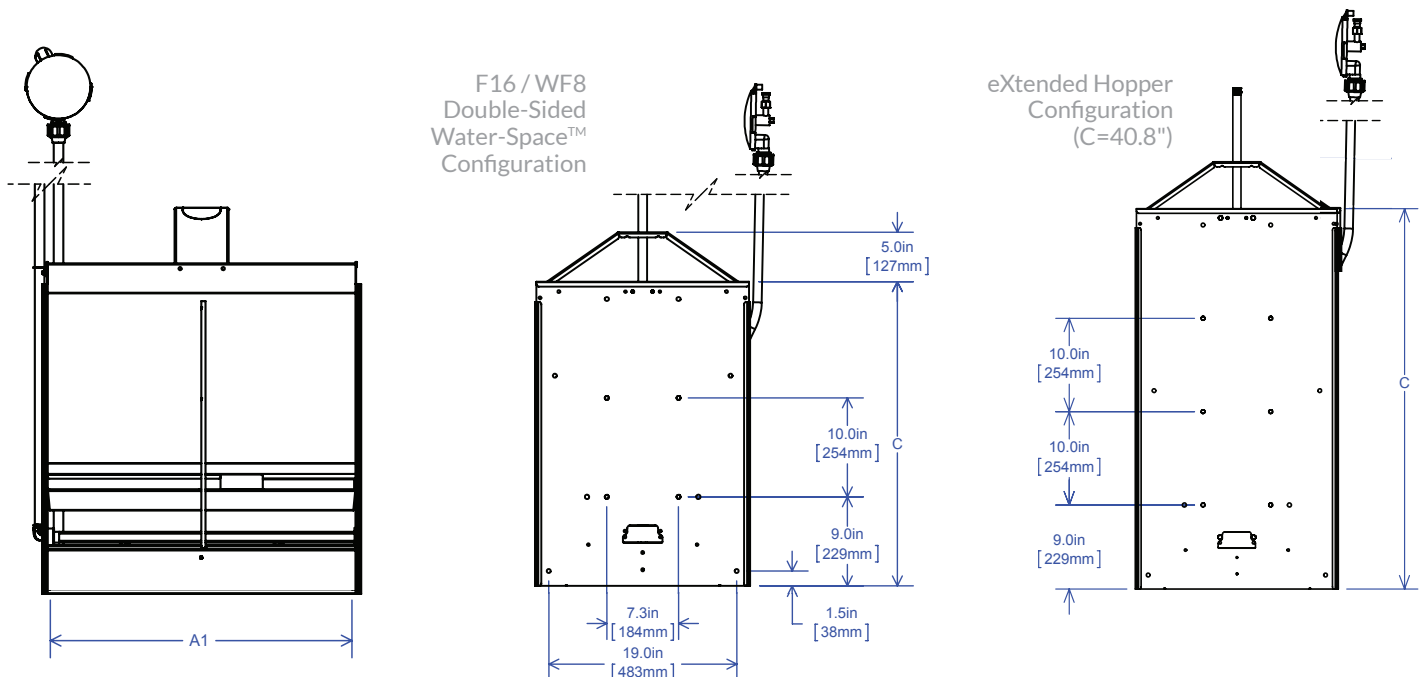
Multiple holes and knockouts; additional accessories are available.

Two water lines required for Water-Space™ feeder.

Total pigs per feeder	48-64 pigs	66-84 pigs	72-96 pigs	96-128 pigs	120-160 pigs	144-192 pigs
Spaces per side / length	2 spaces / 30"	3 space / 42"	3 space / 48"	4 spaces / 60"	5 spaces / 72"	6 spaces / 86"
Wean-to-Finish model	Model 230	Model 342	Model 348	Model 460	Model 572	Model 686
Dimension (A1 x C)	28.7" x 30.8"	40.7" x 30.8"	47.6" x 30.8"	58.7" x 30.8"	70.7" x 30.8"	84.7" x 30.8"
Feed capacity ^{1,2}	168 lbs	227 lbs	273 lbs	343 lbs	413 lbs	495 lbs

¹capacities will vary based on your barn and feed situation. ²hopper capacity based on double sided configuration.

³other configurations available by request.





**CRYSTAL
SPRING**

HOG EQUIPMENT



Water-Space™ Nursery Feeder

A better start for a better finish

The results you've come to expect, now in the nursery

Water-Space™ enables easy and natural water consumption.

Wet/Dry feeding improves daily gain while decreasing feed and water waste.

Pigs as small as 8 lbs (3.6 kg) benefit from additional gain of Wet/Dry feeding.

NEW Crystal Spring Nipple provides constant flow from the nipple with variable barn water pressure.

EZ-Adjust™ is simple and repeatable, providing precise feed flow control in 1/16" increments.

Water-Space™ nursery feeder feeds up to 10 pigs per feed space.



1.204.433.7178
www.cshe.com



Water-Space™ Nursery Feeder

series #
N2

Water-Space™ Nursery

20-gauge stainless steel

1 pig per inch of feeder length/side

60 lbs max pig weight

N5 | Single sided configuration²

series #
G2

Water-Space™ Nursery

18-gauge stainless steel

1 pig per inch of feeder length/side

60 lbs max pig weight

series #
G2X

Extended Hopper Model³

Increase feed capacity with the G2X model

High-quality construction

Heavy duty: all 304 series stainless. Choose from 18- or 20-gauge.

Lapped and folded parts eliminate sharp edges and strengthen wear points.

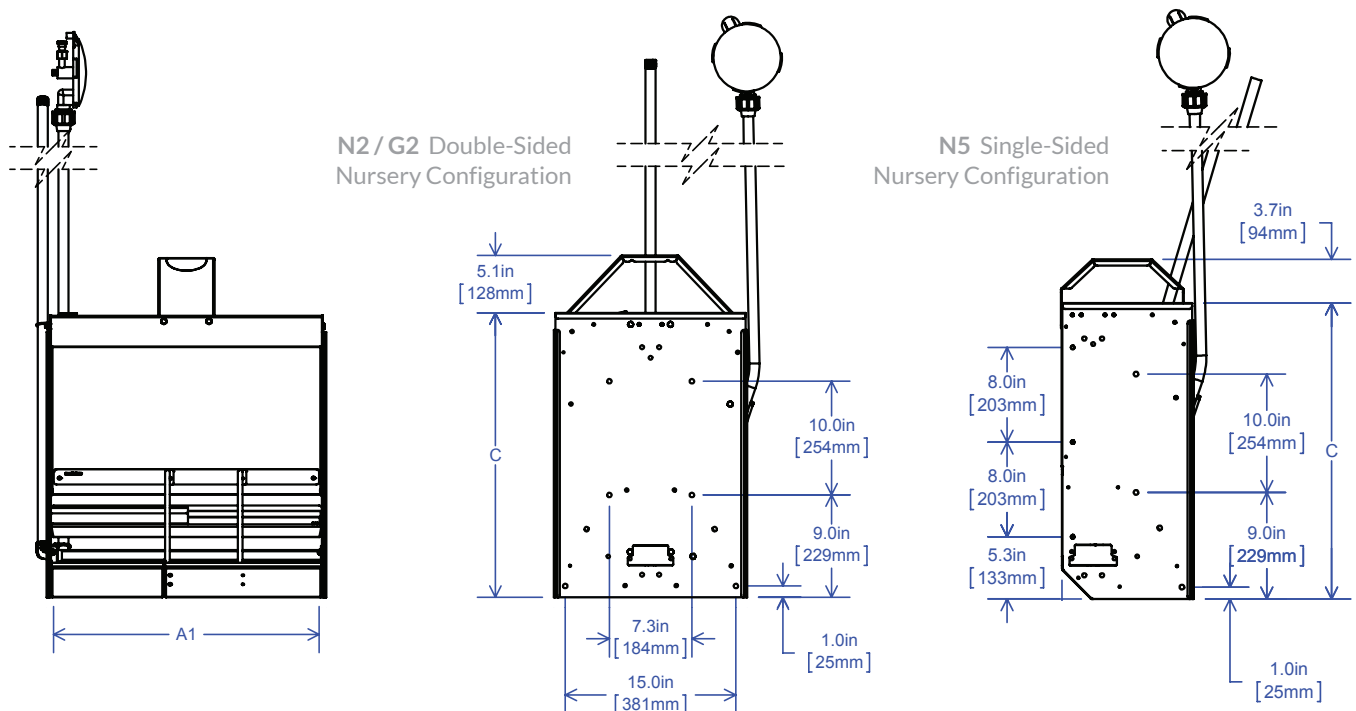
Multiple holes and knockouts; additional accessories are available.

Two water lines required for Water-Space™.

Total pigs per feeder	44-52 pigs	54-66 pigs	66-78 pigs	76-92 pigs	88-104 pigs	98-118 pigs	110-130 pigs
Spaces per side / length	3 space / 24"	3 spaces / 30"	4 spaces / 36"	5 space / 42"	6 space / 48"	6 spaces / 54"	7 spaces / 60"
Nursery feeder model	Model 324	Model 430	Model 436	Model 542	Model 648	Model 654	Model 760
Dimension (A1 x C) ²	22.6" x 25.0"	30.1" x 25.0"	36.1" x 25.0"	40.6" x 25.0"	46.6" x 25.0"	52.6" x 25.0"	58.6" x 25.0"
Feed capacity ¹	89 lbs	120 lbs	144 lbs	161 lbs	185 lbs	209 lbs	233 lbs

¹capacities will vary based on your barn and feed situation; based on double-sided feeders. ²single-sided feeders feed half the number of pigs.

³extended hopper feeders are 31" tall.





**CRYSTAL
SPRING**

HOG EQUIPMENT

Wet/Dry Finishing Feeder

The original: More gain, less waste



Proven to be the industry's most profitable feeder

Pigs have the choice to eat dry feed from the shelf or combine feed and water in the trough.

Improve daily gain while decreasing feed and water waste.

Trough divider and low lip height allow feeder to be used in wean-to-finish facilities.

NEW Crystal Spring Nipple provides constant flow from the nipple with variable barn water pressure.

EZ-Adjust™ is simple and repeatable, providing precise feed flow control in 1/16" increments.

Feeds 16 pigs per space.



1.204.433.7178
www.cshe.com



Wet/Dry Finishing Feeder

series # **F1** **Wet/Dry Feeder-to-Finish**

No guard under water line
50 lbs minimum pig weight
F3 | Single Sided configuration

series # **F2** **Wet/Dry Wean-to-Finish**

Guard present under water line
14-280+ lbs pigs

series # **WF9** **Wet/Dry Wean-to-Finish + Two-Stage Feed Shelf**

Throat insert included
Guard present under water line
8-280+ lbs pigs

series # **X** **Extended Hopper Models**

Add 80% more feed capacity with the F1X, F2X or WF9X models

High-quality construction

Heavy duty construction: 12, 14, and 16 gauge 304 series stainless steel.

Lapped and folded parts eliminate sharp edges and strengthen wear points.

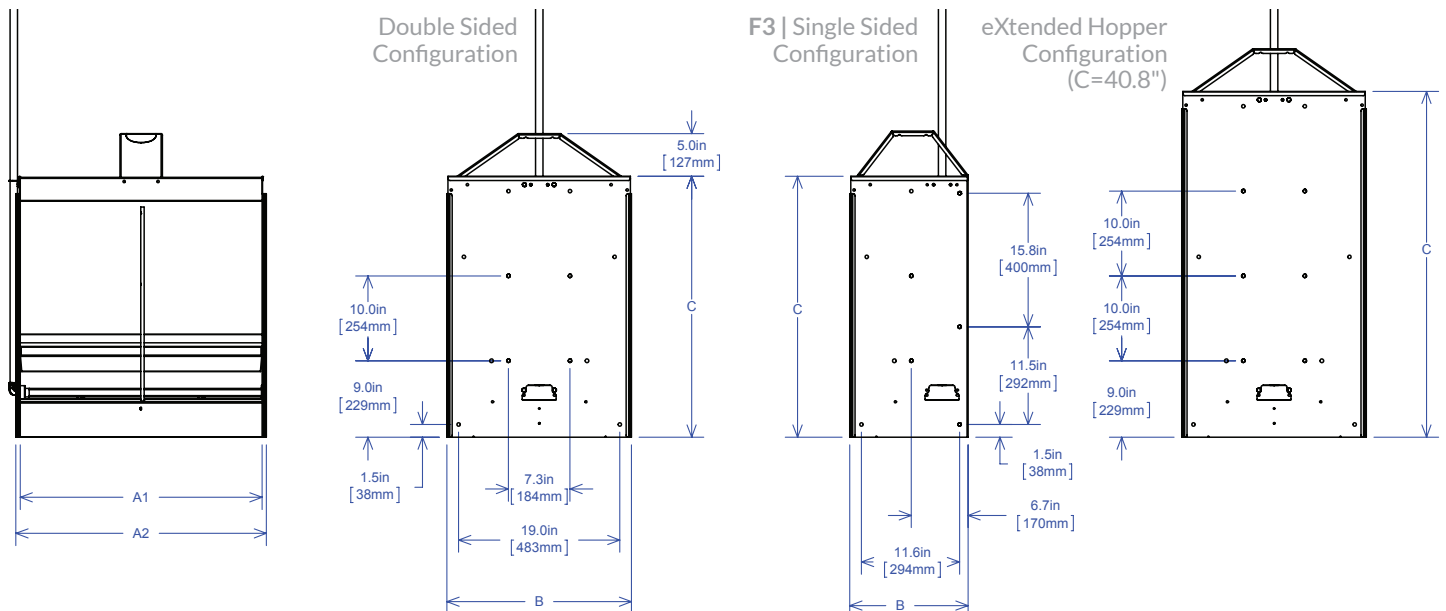
Welded for strong, long-lasting construction.

Multiple holes and knockouts allow for many mounting situations; various mounting accessories available.

Total pigs per feeder	24-32 pigs	48-64 pigs	66-84 pigs	72-96 pigs	96-128 pigs	120-160 pigs	144-192 pigs
Spaces per side / length	1 space / 15"	2 spaces / 30"	3 space / 42"	3 space / 48"	4 spaces / 60"	5 spaces / 72"	6 spaces / 86"
Feeder model	Model 115	Model 230	Model 342	Model 348	Model 460	Model 572	Model 686
Dimension (A1 x C)	14.9" x 30.8"	28.7" x 30.8"	40.7" x 30.8"	46.7" x 30.8"	58.7" x 30.8"	70.7" x 30.8"	84.7" x 30.8"
Feed capacity ^{1,2}	87 lbs	168 lbs	227 lbs	273 lbs	343 lbs	413 lbs	495 lbs

¹capacities will vary based on your barn and feed situation. ²hopper capacity based on double sided configuration.

³other configurations are available upon request





**CRYSTAL
SPRING**

HOG EQUIPMENT

Wet/Dry Finishing Feeder

The original: More gain, less waste



Proven to be the industry's most profitable feeder

Pigs have the choice to eat dry feed from the shelf or combine feed and water in the trough.

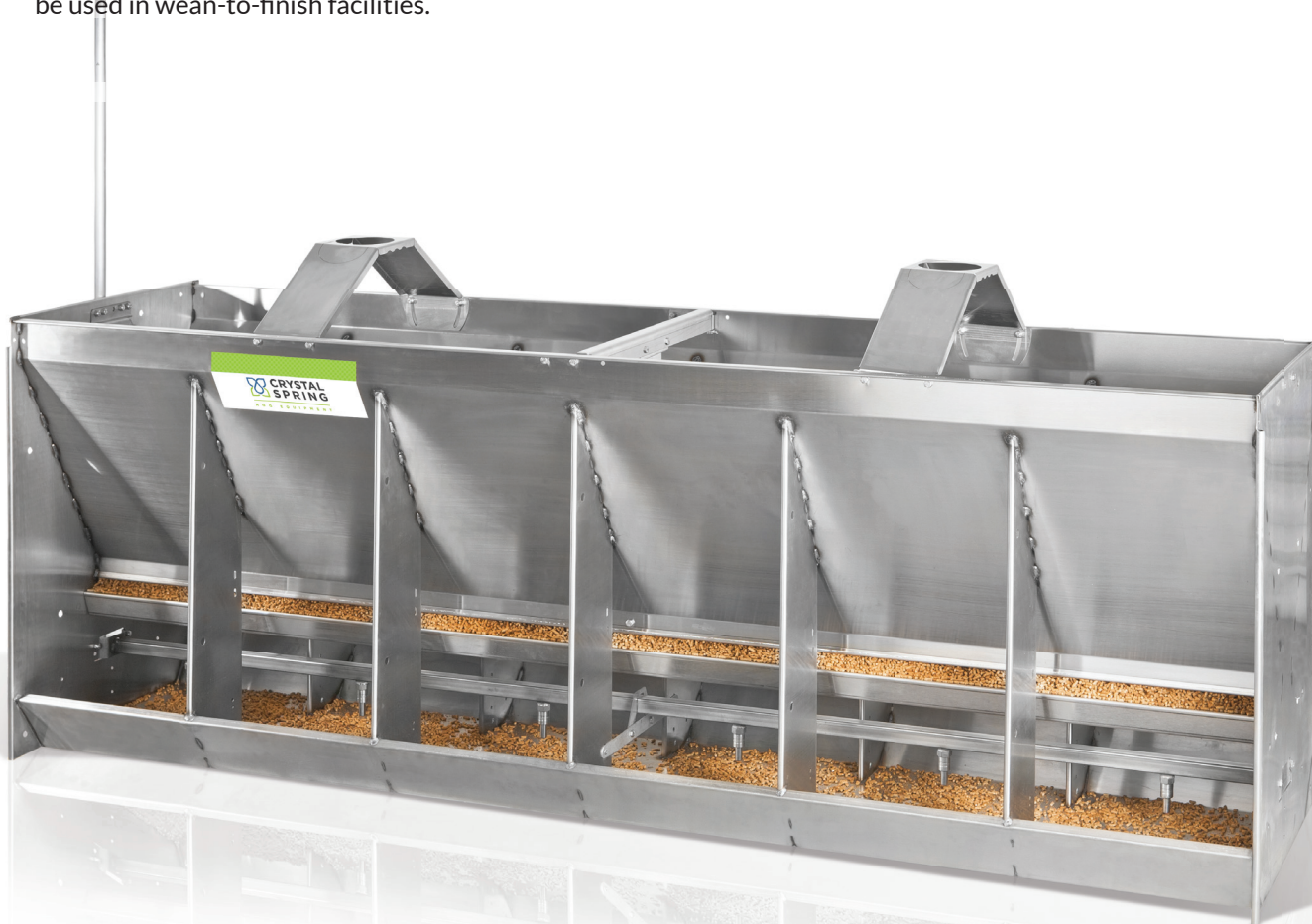
Improve daily gain while decreasing feed and water waste.

Trough divider and low lip height allow feeder to be used in wean-to-finish facilities.

NEW Crystal Spring Nipple provides constant flow from the nipple with variable barn water pressure.

EZ-Adjust™ is simple and repeatable, providing precise feed flow control in 1/16" increments.

Feeds 16 pigs per space.



1.204.433.7178
www.cshe.com



Wet/Dry Finishing Feeder

series # **F1** **Wet/Dry Feeder-to-Finish**

No guard under water line
50 lbs minimum pig weight
F3 | Single Sided configuration

series # **F2** **Wet/Dry Wean-to-Finish**

Guard present under water line
14-280+ lbs pigs

series # **WF9** **Wet/Dry Wean-to-Finish + Two-Stage Feed Shelf**

Throat insert included
Guard present under water line
8-280+ lbs pigs

series # **X** **Extended Hopper Models** Add 80% more feed capacity with the F1X, F2X or WF9X models

High-quality construction

Heavy duty construction: 12, 14, and 16 gauge 304 series stainless steel.

Lapped and folded parts eliminate sharp edges and strengthen wear points.

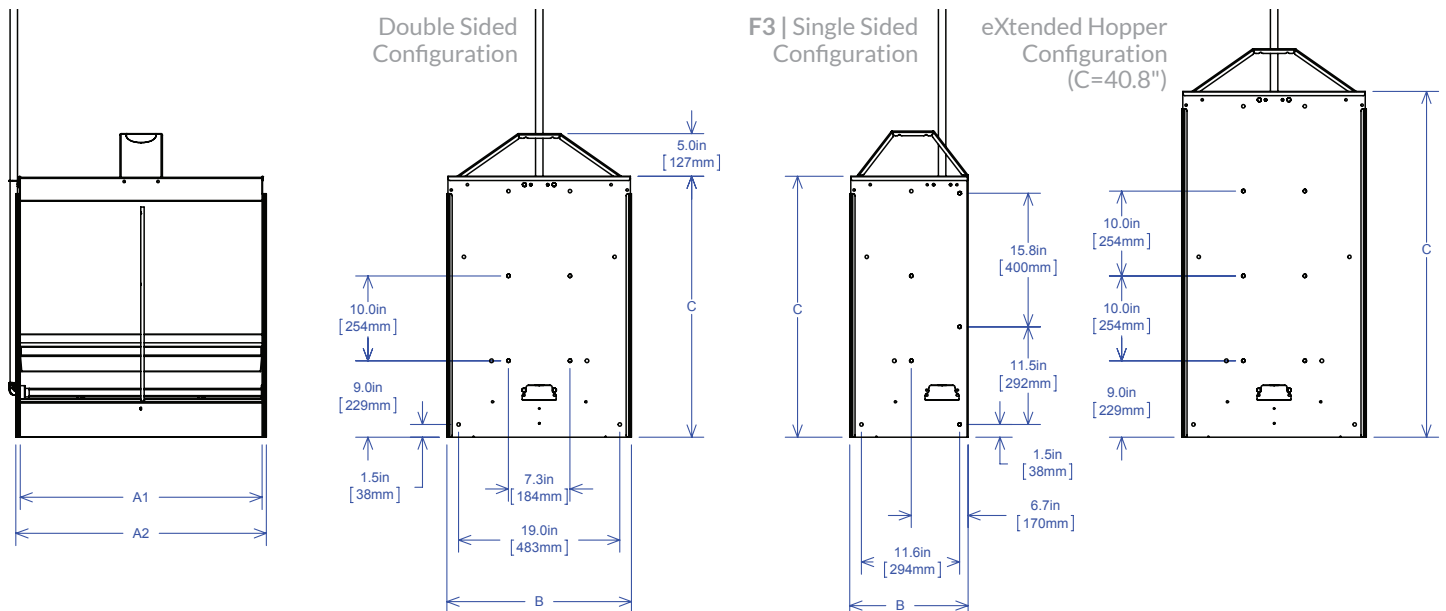
Welded for strong, long-lasting construction.

Multiple holes and knockouts allow for many mounting situations; various mounting accessories available.

Total pigs per feeder	24-32 pigs	48-64 pigs	66-84 pigs	72-96 pigs	96-128 pigs	120-160 pigs	144-192 pigs
Spaces per side / length	1 space / 15"	2 spaces / 30"	3 space / 42"	3 space / 48"	4 spaces / 60"	5 spaces / 72"	6 spaces / 86"
Feeder model	Model 115	Model 230	Model 342	Model 348	Model 460	Model 572	Model 686
Dimension (A1 x C)	14.9" x 30.8"	28.7" x 30.8"	40.7" x 30.8"	46.7" x 30.8"	58.7" x 30.8"	70.7" x 30.8"	84.7" x 30.8"
Feed capacity ^{1,2}	87 lbs	168 lbs	227 lbs	273 lbs	343 lbs	413 lbs	495 lbs

¹capacities will vary based on your barn and feed situation. ²hopper capacity based on double sided configuration.

³other configurations are available upon request





**CRYSTAL
SPRING**
HOG EQUIPMENT



Water-Space™ Wean-to-Finish Feeder

A better start for a better finish

Water-Space™ enables easy and natural water consumption.

Wet/Dry feeding improves daily gain while decreasing feed and water waste.

Pigs as small as 8 lbs (3.6 kg) benefit from additional gain of Wet/Dry feeding.

NEW Crystal Spring Nipple provides constant flow from the nipple with variable barn water pressure.

EZ-Adjust™ is simple and repeatable, providing precise feed flow control in 1/16" increments.

Feeds up to 16 pigs per space on wean-to-finish feeders.



1.204.433.7178
www.cshe.com



Water-Space™ Wean-to-Finish Feeder

series #
F16 **Water-Space™ Wean-to-Finish**
Guard present under water line
14-280+ lbs pigs

series #
WF8 **Water-Space™ Wean-to-Finish**
+ Two-Stage Feed Shelf
Throat insert included
Guard present under water line
8-280+ lbs pigs

series #
X **Extended Hopper Models**
Add 80% more feed capacity with the F16X
or WF8X models

High-quality construction

WF8 includes patented EZ-Adjust™ two stage shelf to quickly and easily lower the feed shelf 3" for the early weaned pig.

Heavy duty: all 304 series stainless.

Lapped and folded parts eliminate sharp edges and strengthen wear points.

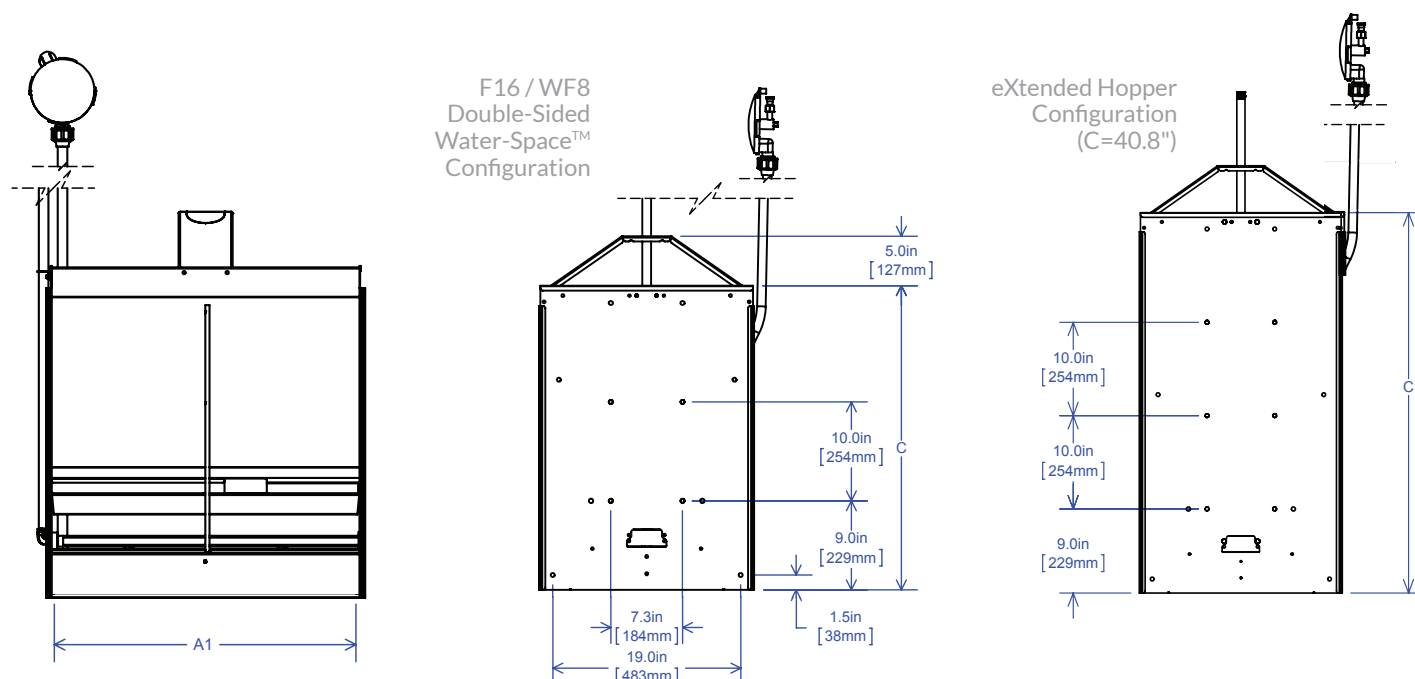
Multiple holes and knockouts; additional accessories are available.

Two water lines required for Water-Space™ feeder.

Total pigs per feeder	48-64 pigs	66-84 pigs	72-96 pigs	96-128 pigs	120-160 pigs	144-192 pigs
Spaces per side / length	2 spaces / 30"	3 space / 42"	3 space / 48"	4 spaces / 60"	5 spaces / 72"	6 spaces / 86"
Wean-to-Finish model	Model 230	Model 342	Model 348	Model 460	Model 572	Model 686
Dimension (A1 x C)	28.7" x 30.8"	40.7" x 30.8"	47.6" x 30.8"	58.7" x 30.8"	70.7" x 30.8"	84.7" x 30.8"
Feed capacity ^{1,2}	168 lbs	227 lbs	273 lbs	343 lbs	413 lbs	495 lbs

¹capacities will vary based on your barn and feed situation. ²hopper capacity based on double sided configuration.

³other configurations available by request.





**CRYSTAL
SPRING**

HOG EQUIPMENT

Wet/Dry Finishing Feeder

The original: More gain, less waste



Proven to be the industry's most profitable feeder

Pigs have the choice to eat dry feed from the shelf or combine feed and water in the trough.

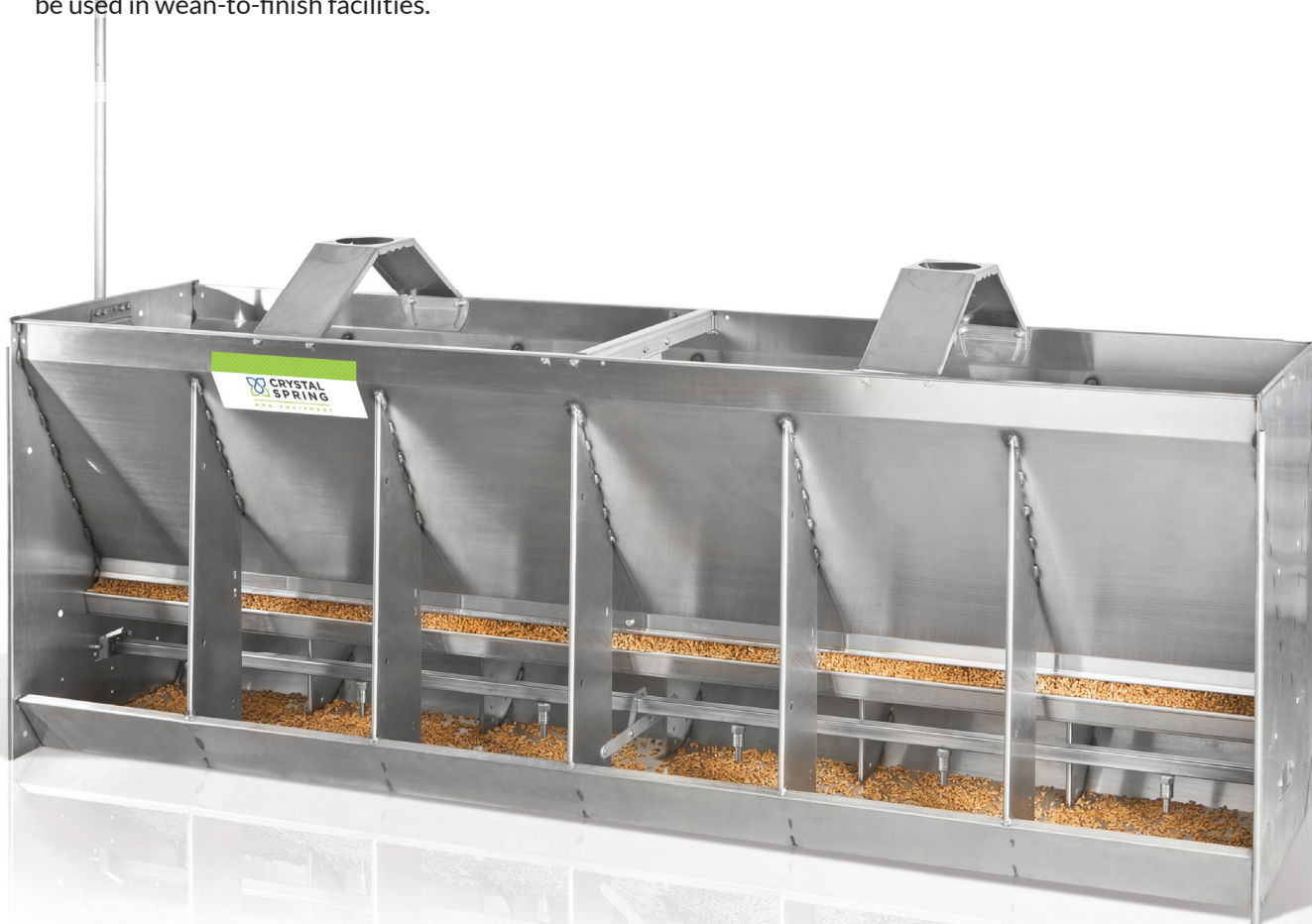
Improve daily gain while decreasing feed and water waste.

Trough divider and low lip height allow feeder to be used in wean-to-finish facilities.

NEW Crystal Spring Nipple provides constant flow from the nipple with variable barn water pressure.

EZ-Adjust™ is simple and repeatable, providing precise feed flow control in 1/16" increments.

Feeds 16 pigs per space.



1.204.433.7178
www.cshe.com



Wet/Dry Finishing Feeder

series # **Wet/Dry Feeder-to-Finish**

F1

No guard under water line
50 lbs minimum pig weight
F3 | Single Sided configuration

series # **Wet/Dry Wean-to-Finish**

F2

Guard present under water line
14-280+ lbs pigs

series # **Wet/Dry Wean-to-Finish + Two-Stage Feed Shelf**

WF9

Throat insert included
Guard present under water line
8-280+ lbs pigs

series # **Extended Hopper Models**

X

Add 80% more feed capacity with the F1X,
F2X or WF9X models

High-quality construction

Heavy duty construction: 12, 14, and 16 gauge
304 series stainless steel.

Lapped and folded parts eliminate sharp edges
and strengthen wear points.

Welded for strong, long-lasting construction.

Multiple holes and knockouts allow for
many mounting situations; various mounting
accessories available.

Total pigs per feeder	24-32 pigs	48-64 pigs	66-84 pigs	72-96 pigs	96-128 pigs	120-160 pigs	144-192 pigs
Spaces per side / length	1 space / 15"	2 spaces / 30"	3 space / 42"	3 space / 48"	4 spaces / 60"	5 spaces / 72"	6 spaces / 86"
Feeder model	Model 115	Model 230	Model 342	Model 348	Model 460	Model 572	Model 686
Dimension (A1 x C)	14.9" x 30.8"	28.7" x 30.8"	40.7" x 30.8"	46.7" x 30.8"	58.7" x 30.8"	70.7" x 30.8"	84.7" x 30.8"
Feed capacity ^{1,2}	87 lbs	168 lbs	227 lbs	273 lbs	343 lbs	413 lbs	495 lbs

¹capacities will vary based on your barn and feed situation. ²hopper capacity based on double sided configuration.

³other configurations are available upon request

