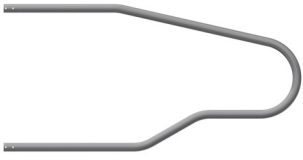


## CHOOSE YOUR LOOP

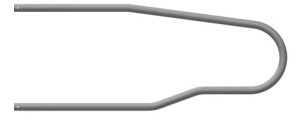
We offer a wide selection of stall divider options for both mature and young stock



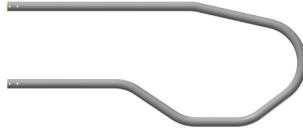
Y2K - MATURE COW



J2K - MATURE JERSEY



H2K - HEIFER YOUNG STOCK



SY2K - MATURE COW

## AVAILABLE T-POSTS

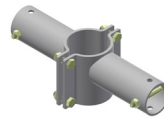


H2H T-POST CONNECTOR

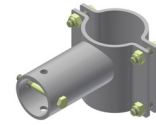


SINGLE T-POST CONNECTOR

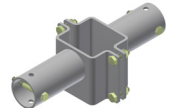
## AVAILABLE LOOP MOUNT TO POST BRACKETS



H2H CLAMP-ON SLEEVE



SINGLE ROW CLAMP-ON SLEEVE



H2H SQUARE POST MOUNT

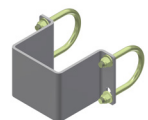
## AVAILABLE RAIL MOUNT BRACKETS



SQUARE WOOD POST PLATE BRACKET



ROUND MOUNTING CLAMP



SQUARE MOUNTING CLAMP

# BioRail Freestall Mounting System

The strongest rail mount system on the market

The BioRail has become our most popular freestall system due to its durability, strength, and versatility. This twin rail system features an adjustable design that allows for height and width adjustments after installation, giving you the ability to customize the system depending on the age, breed, and size of the animals in that pen.

This system is ideal for facilities using sand or compost bedding. It keeps all mounts out of bedding, reducing the risk of corrosion. It is also best suited for situations where no or limited concrete is required in the bedding area.

*This is an Artex loop and they've got it done right. The double beam (Bio Rail) mounting system has raised the mounting beam above the level of the upper rail. With this placement, we can get good support and good structural integrity, while preventing the rail from obstructing the front lunge space of the cow. The lower divider rail extends beyond the brisket locator to line the cows up when resting. When you put all this together, it looks just right.* **Dr. Nigel Cook | Professor | University of Wisconsin-Madison**



- » No steel mounts in bedding
- » Can mount on building columns
- » Saves on labour and concrete costs
- » Variety of clamp and mount options
- » Can be used with all bedding types

SCAN TO WATCH THE VIDEO

