

EDGE[®]

THE NEXT GENERATION OF CONTROLLERS



THE LAST CONTROLLER YOU'LL EVER NEED

EDGE® is a single platform that is versatile and intuitive allowing it to handle all control applications. The unique design makes EDGE the number one choice controller on the market that can be configured to match your operation's specific requirements. It is also flexible enough to be adapted to new construction or existing system upgrades.



INFORMATION AT A GLANCE

Navigation is easy with the 15" color touchscreen. The buttons are large enough even when wearing gloves, and color-coded notifications offer real-time status of your entire operation. Site-wide conditions can also be monitored from the touchscreen.



Patent Pending



MULTI-LOCATION CONTROL

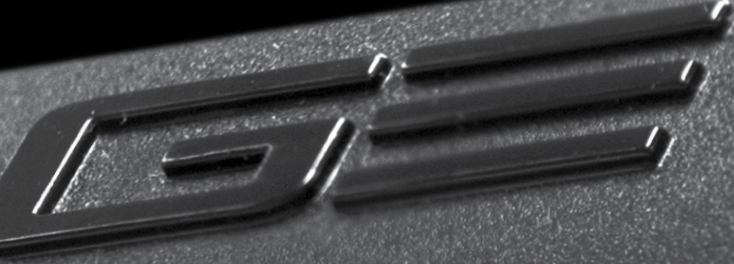
With EDGE, you have the power to control multiple buildings or rooms from a single controller using one interface. It reduces management complexity and eliminates the need to have a separate controller for each individual location. One EDGE system can easily replace up to 64 individual controllers.



REMOTE CONNECTIVITY

Plug in an Ethernet cable and you are ready to take control of the system from any web-enabled device. Monitor and analyze data in real-time or quickly respond to any issues. If a problem occurs and an alarm is triggered, you will be immediately notified via text message or email.





SIMPLE SCENARIO BY-PASS

The Scenario feature allows fans, inlets and/or lights to be easily set in by-pass mode. Simply press a button pre-programmed for a specific situation. And, since it doesn't require direct interaction with EDGE, the button can be located anywhere on site. Scenarios can be created for any number of situations – such as animal age, time of day, and outside temperature - each with its own operating criteria. Users can access Scenario via the EDGE control or through the web if utilizing version 2.4.4. or higher.



EASY CONFIGURATION

Simply input the location and production type of your equipment (fans, inlets, temperature probes, etc.) and EDGE will automatically configure to optimally operate. Our products are delivered to you pre-loaded so set-up is quick. Plus, the intuitive interface makes it easy to modify settings at any time.

Actual 0%	Bandwidth: 8.0'		Fans		Air speed		Ceiling Inlet-1	
	Min	Max	Start	Stop	Max	Min	Max	comp
Stage 1	942	2827	68.0	72.4	25%	75%		
Stage 2	4712	6597	74.1	75.4	100%	100%	25%	75%
Stage 3	7540	7540	76.0	74.5	100%	100%	100%	100%

AUTO-CONFIGURATION

Room 1 - 72.8°F → 70.1°F 1 day

Mode: Power Status: None

Total CFM: 1885 Total CFM: 1885

CFM/head: 3.0 Minimum CFM/head: 3.0 ± 0.0 ± 00:00:00

Bandwidth: 8.0' Bandwidth: 8.0' ± 0.0' ± 00:00:00

Status	Start T°	Stop T°	Max	Stage parameters
1 Power	70.1°	74.7°		
2 Power	77.4°	76.9°	78.1°	
3 Power	78.1°	76.6°		

AUTO-ADJUST SETTINGS



VENTILATION BASED ON CFM PER HEAD

With EDGE in control, say 'goodbye' to confusing formulas and arbitrary ventilation settings. Ensure accurate control of the environment by inputting CFM per head values and the number of animals in a particular building. Revolutionary EDGE takes it from there, automatically determining the proper inlet settings and fan stages.

RELIABLE AND INTUITIVE

EDGE is designed with integrated diagnostics and a triple layer of protection making it the most reliable controller in the industry.



SELF-DIAGNOSTICS

Troubleshooting is easy with EDGE's built-in self-diagnostics which identify issues before you reach for a manual or call Tech Support. It will pinpoint exactly where the problem is and what you need to do to fix it, including things like disconnected sensors, too much or too little current, or a blip in internet connectivity.



FULL REDUNDANCY

Operate multiple locations with a single, main controller. Redundant power supplies and communication paths provide uninterrupted operation in the event of a power supply failure. For added peace-of-mind, add a second main controller to maintain operation should the primary main controller fail for any reason.



FAIL SAFE MODE

In the rare event that a main controller malfunctions, and the even more rare complete power loss, EDGE includes a third level of safety and security: fail safe relays. Their special contacts allow "de-energize to trip" functionality so the system can drop curtains to ensure continued fresh air or activate tunnel fans to keep air moving.

When lightning hit my EDGE main controller, the redundancy protection automatically switched over to a slave and ran with no problem. Technical Support was a huge advantage making the repairs quick and simple.

Kenneth Golden
Grower - Eva, Alabama

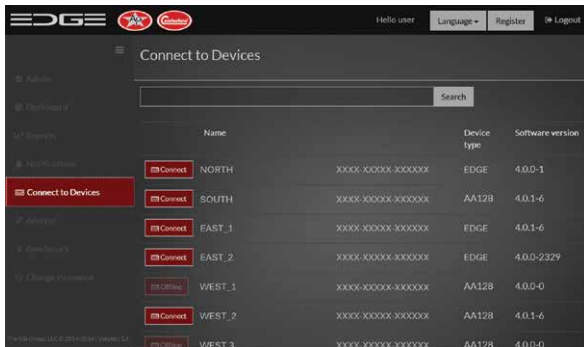


You and EDGE are in control, managing and monitoring ventilation, feeding, cooling, heating, lighting, and more!

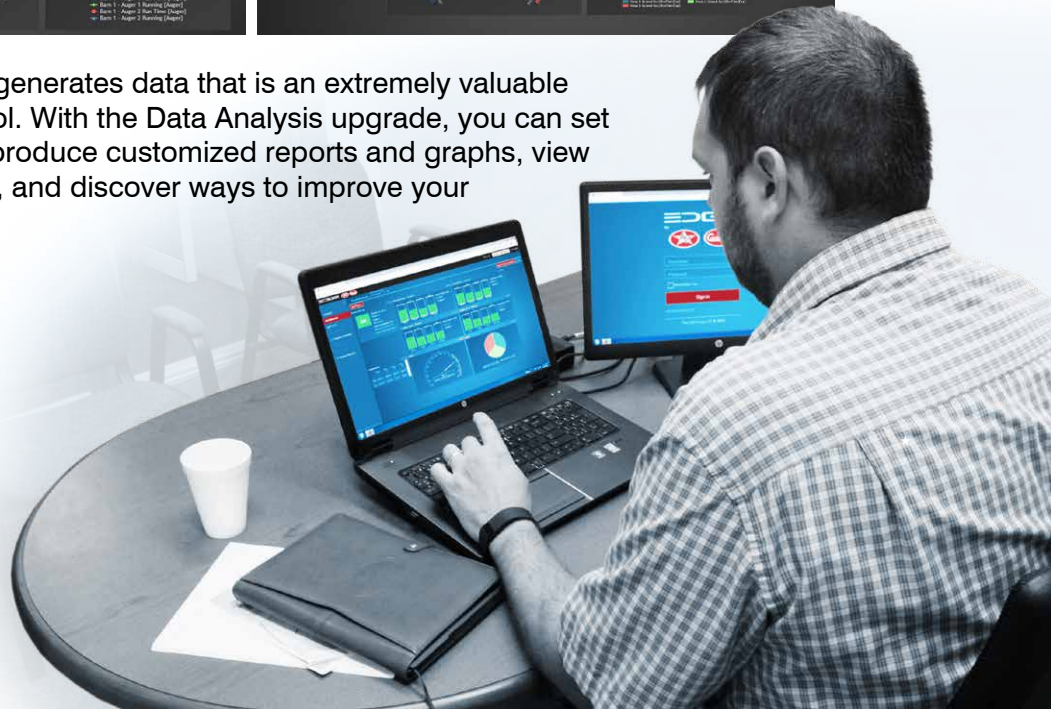


DATA ANALYSIS

Monitor and manage all aspects of your production process through GSIEDGE.com. The site keeps you informed with real-time site information by utilizing easy-to-read graphics and quickly identifies issues to optimize your farm's performance.



Your system collects and generates data that is an extremely valuable business management tool. With the Data Analysis upgrade, you can set production benchmarks, produce customized reports and graphs, view historical data and alarms, and discover ways to improve your bottom line.



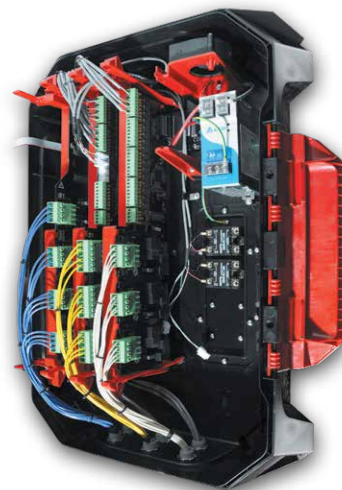


BUILT TO LAST, BUILT TO GROW



MODULAR ARCHITECTURE

Whether you run a large operation with dozens of sites or a smaller facility with one or two buildings, EDGE becomes more economical as your operation expands.

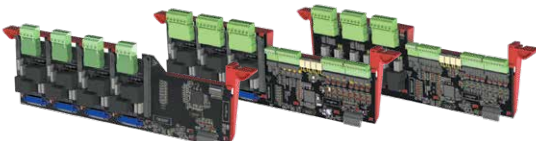


Two styles of expansion boxes hold either three or six plug-in modules. View and modify control settings from any location with the optional remote display boxes. Ready to expand? Add more expansion boxes and you're ready to go.



PLUG-IN MODULES

Customize your system based on specific configuration needs with plug-in modules. A positive retention system assures modules are fully seated to prevent installation errors. Once plugged in, the module identifies itself and relays functionality. As you expand or as new technologies and applications are introduced, simply add more modules to integrate a wide variety of components into a single, efficient system.



Adding variable outputs (SSR) to new or existing EDGE systems is easier with the Power Module. Each module contains either two or four SSRs and corresponding 15-ft. low voltage communication cables that connect directly to variable output control cards*. The EDGE Power Module is housed in a sealed, corrosion-resistant plastic enclosure, equipped with a heatsink to decrease internal operating temperature and increase component life.

*sold separately



The EDGE Power Module is designed for applications requiring more than the four variable outputs accommodated by each heatsink-equipped expansion box.



MULTIPLE TYPES OF INPUTS

EDGE allows you to monitor temperature, static pressure, humidity, wind speed, wind direction, precipitation, lighting, ammonia and CO2 sensors, inlet positions, current transformers, water meters, animal weights, feed usage and run time, alarms and more! There is no limit to what EDGE can do for your operation.



WEATHER STATION



AIR VELOCITY



LIGHT SENSOR



HUMIDITY SENSOR



CO2 SENSOR



AMMONIA SENSOR



WATER METER



H2O PRESSURE SENSOR



STATIC PRESSURE PROBE



ALARMS

Record individual weights, track growth patterns and even drill down into individual groups such as males and females with the EDGE Bird Scale.



Monitor feed usage, track feed levels and automatically notify your feed mill when bins are getting low with the EDGE Bin Scale.



VARIABLE LIGHTING

Without the need for other external power boxes, EDGE can dim any type of bulb, up to 8KW of lighting, with flicker-free operation.



LED TEMPERATURE PROBES

Patent pending LED temperature probes were developed to simplify installation and take the hassle out of individually identifying each probe's location.



RUGGED FOR THE ENVIRONMENT

Designed to tolerate temperatures from -20°C to +50°C (-4°F to +122°F), relative humidity range of 0-95%, and corrosive gas, EDGE performs in the toughest environments.



SECURE WIRE CONFIGURATION

The wire management system is designed for easy access with main high voltage wires physically separated from low voltage wires.

PROVEN & DEPENDABLE™



GLOBAL SUPPORT

MULTI-LANGUAGE SUPPORT

Switching between languages is as simple as pressing a button on the main screen. The system supports all major languages for the region in which it is installed so you can customize for global operations and is ideal for integrators and multi-national corporations. Regardless of the language, the system works the same way anywhere in the world.

MULTI-REGION CERTIFICATES

As with languages, EDGE has the appropriate certifications for the regions in which it is sold so it can be deployed in all markets. For North America, EDGE is UL/CSA certified, and in the European Union, it is CE-approved.



SERVICE & SUPPORT

More than an equipment supplier, we're a team, working alongside producers like you to provide equipment inspired by your needs and manufactured to work as hard as you do. From feeding and ventilation, to alarms and controls, we have the proven and dependable solutions to maximize the growth potential of every animal and every aspect of your business.



www.automatedproduction.com
www.cumberlandpoultry.com

USA

P.O. Box 20
1004 E. Illinois Street
Assumption, IL 62510
Ph. 217-226-4449
Fax: 217-226-3540

INTERNATIONAL

5200 Armand-Frappier
St-Hubert (QC)
Canada J3Z 1G5
Tél. +1 877-926-2777
Fax +1-877-408-1046

For more information contact your local
AP/Cumberland representative or visit us online.

